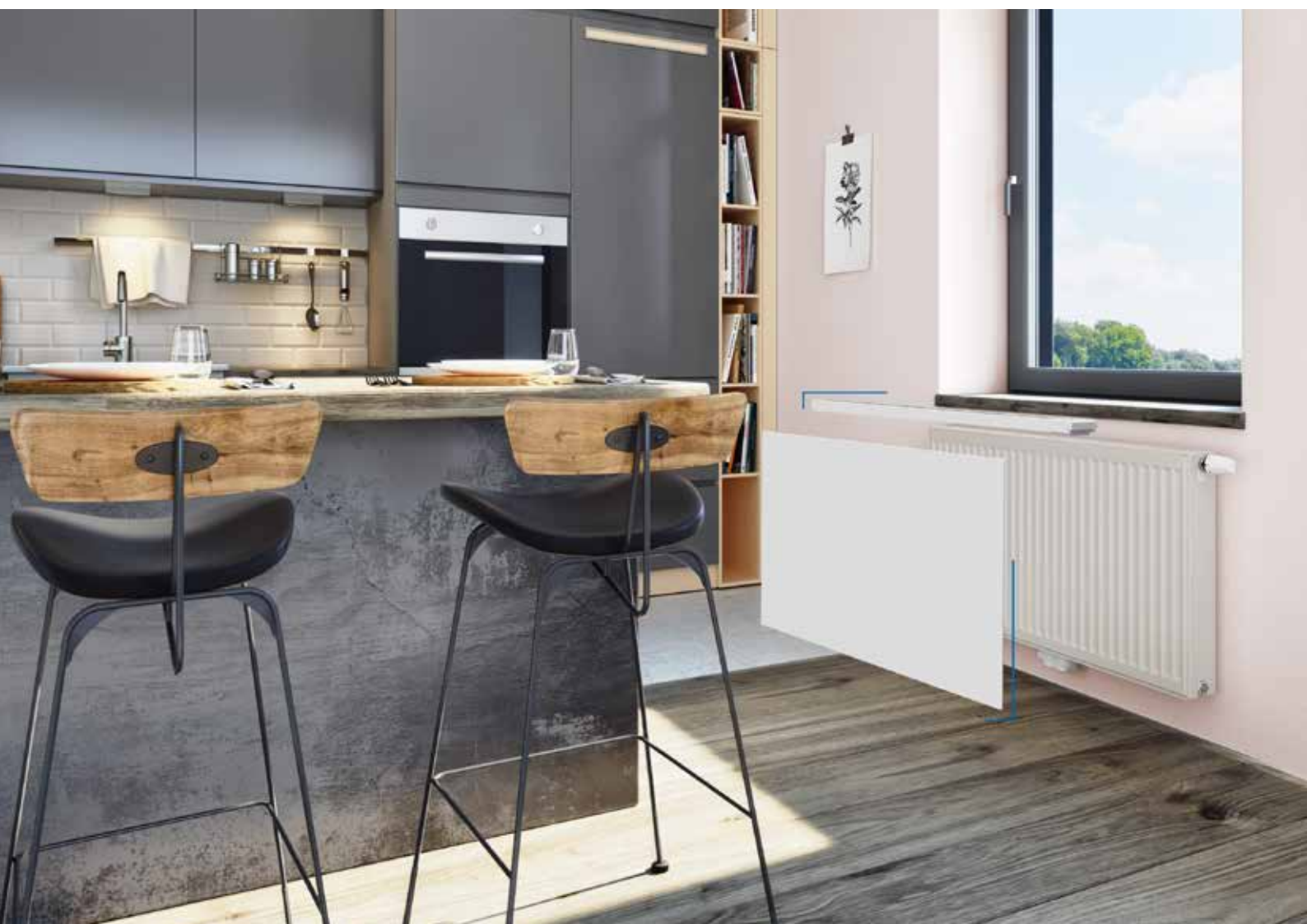


RADIK V-POWER

steel panel radiator suitable for heat pumps





RADIATOR SUITABLE FOR HEAT PUMPS

RADIK V-POWER is a modern radiator that is specially designed for efficient heating in systems with low operating temperatures, such as those using heat pumps. This unit has integrated fans and a stand-alone controller, which allows it to increase its heat output by up to 60%. Thanks to this feature, it is possible to achieve higher heat output even at lower water temperatures in the system. **RADIK V-POWER** can also be used in the summer months in passive cooling mode, when it can use the cooler water that some types of heat pumps can supply to the heating system and thus cool the air in the room. The radiator can be used with different air flow rates or without active ventilation.

In addition to the basic **RADIK V-POWER** model, retrofit sets **RADIK V-POWER SET** with flat panel are also available to enhance the look of existing RADIK radiators and **RADIK V-POWER SET BASIC** without flat panel. These sets include fans and a controller to increase the performance and efficiency of the radiators.

The main advantages of the RADIK V-POWER radiator:

1. High efficiency even at low temperatures – ideal for systems with heat pumps.
2. Possibility of fan speed control – adaptation to different heating needs.
3. Up to 60% increase in heat output thanks to integrated fans.

The main advantages of the RADIK V-POWER SET retrofit sets:

1. Possibility to upgrade older radiators – increase performance without the need for complete replacement.
2. Easy installation – the sets are designed to be compatible with existing RADIK radiator models.
3. Flexibility in use – the sets can be selected according to the specific needs and preferences of the user.

The main difference between **RADIK V-POWER** and **RADIK V-POWER SET** is that while **RADIK V-POWER** is a complete new radiator with integrated performance enhancing features, **RADIK V-POWER SET** is a retrofit for existing radiators that allows the same performance improvements to be achieved.



Suitable for heat pumps



It contributes to savings through low-temperature operation



Integrated fans increase performance by up to 60%



Heating and passive cooling

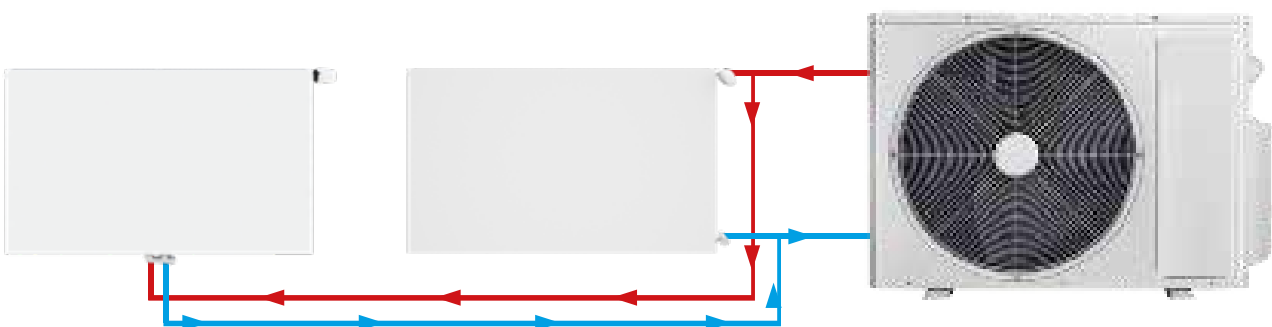


Additional installation of the module on older radiator types



Very quiet operation even for sleep*

- Automatic control of the heating or passive cooling of the fan module, based on sensors of the radiator temperature and the ambient temperature, ensuring optimal operating conditions.
- Maximum safety guaranteed thanks to a safe 12 V DC power supply from an external mains power supply, minimising the risk of electrical shock.
- The universal design of the radiator allows flexible connection methods, which facilitates installation in different spatial conditions.
- The ability to adjust the power level according to individual user needs, resulting in greater user comfort and efficiency.
- Efficient use of thermal energy due to low water-in temperatures, resulting in energy savings and thermal comfort.
- The modern design of the radiator, which fits into all types of interiors, contributes to the aesthetic appearance of the room.
- Low power consumption, varying from 3 to 13 W, which means economical operation and environmental friendliness.



* The maximum noise level is 26.9 dB / 32.7 dB for 3 / 5 fan speed. Measured according to ČSN EN ISO 3744:2011 at a distance of 2 m for a dimension of 624 x 1000 mm, type 22.

RADIK V-POWER

Technical parameters



Description

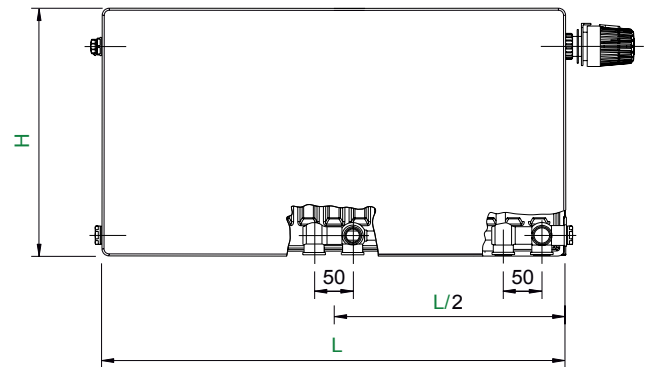
Model **RADIK V-POWER** is an innovative radiator in the **PLAN** version with a flat panel and an integrated fan module that increases the heat output by up to 60%. Its design is intended for low-temperature heating systems, most often heat pumps.

It allows bottom centre, bottom right, left or right side connection to the heating system distribution. Two upper and lower hangers are welded on the back side. Radiators 1800 mm long and longer have six welded hangers.

Technical data

| | |
|--|---|
| Height H | 524, 624, 924 mm |
| Length L | 400, 500, 600, 700, 800, 900, 1000, 1100, 1200, 1400, 1600, 1800, 2000 mm |
| Depth B Type 22 | 102 mm |
| Connection pitch | 50 mm |
| Connection thread | 8 x G1/2 inside |
| Maximum permissible operating pressure | 10 bar |
| Operating temperature | 17 ÷ 60 °C |
| Radiator connection | centre bottom, right bottom, left or right side connection |

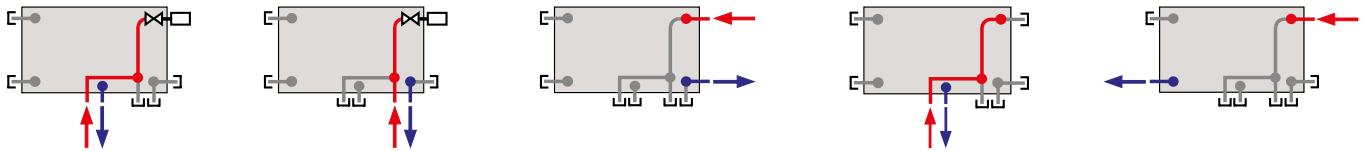
Overview of types



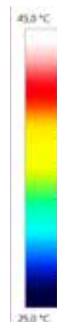
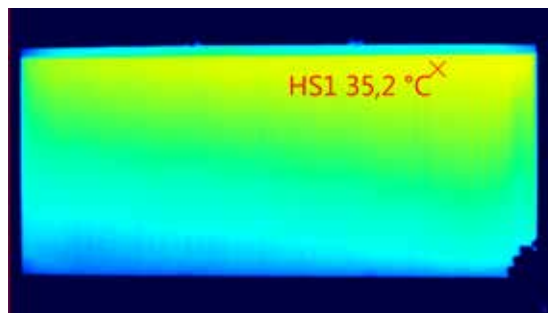
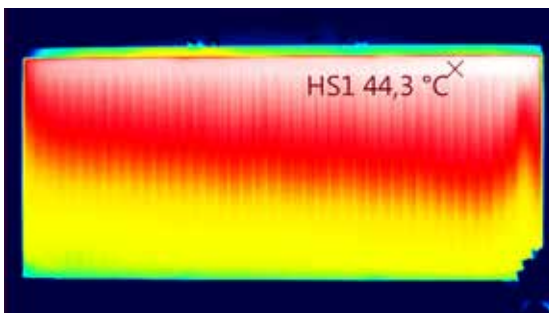
Type 22 V-POWER



Some of the ways to connect to the heating system



All parameters are laboratory tested



Subject to technical changes.

RADIK V-POWER SET / V-POWER SET BASIC

Retrofit solution for RADIK radiators

RADIK V-POWER SET is a set with a flat panel designed for the retrofitting to steel panel radiators. It is also compatible with older RADIK radiators up to 2000 mm long, type 22.

The set includes all the parts needed for assembly and operation.

RADIK V-POWER SET BASIC is a set without a flat panel for retrofitting to steel panel radiators. It is also compatible with older RADIK radiators up to 2000 mm long, type 22.

The set includes all the parts needed for assembly and operation.

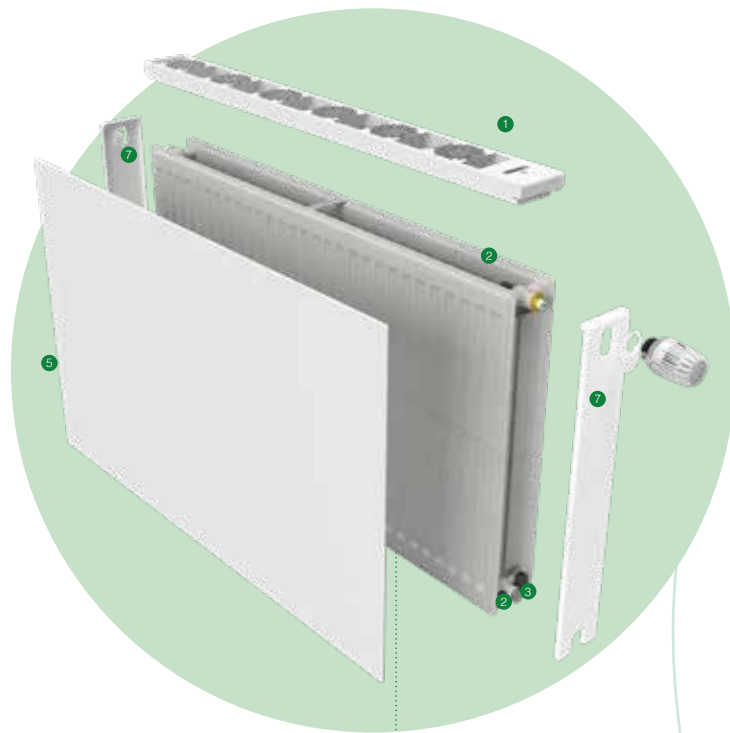
The installation of the set is designed to be as simple as possible and does not require major intervention in the existing heating system.

The set includes:

- 1 ventilation unit
- 2 temperature sensors
- 3 power connector
- 4 power adapter – 1.2 m
- 5 flat panel *
- 6 accessories for mounting the plate on the radiator

Optional accessories (recommended):

- 7 side covers
- 8 extension cable
- 9 thermostatic head



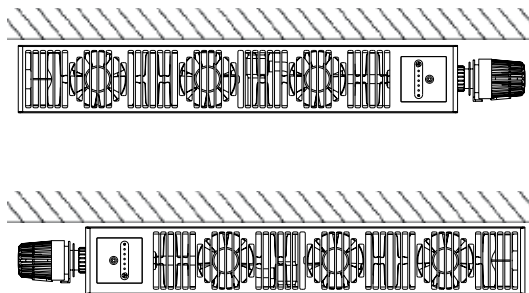
Installation on the existing RADIK radiator.

* 5 Version **RADIK V-POWER SET BASIC** is supplied **WITHOUT A FLAT PANEL**.

HOW TO CHOOSE THE RIGHT SET

RADIK V-POWER SET / V-POWER SET BASIC

Type 22



Designed for models: [see page 6](#)

Warning:

The ventilation unit must be oriented on the radiator so that the control panel is on the same side of the radiator as the water-in connection to the radiator.

Subject to technical changes.

OVERVIEW OF THE RADIK RADIATOR MODELS

RADIK RADIATOR MODELS SUITABLE FOR RADIK V-POWER SET - Type 22

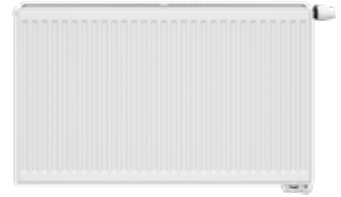
RADIK KLASIK
RADIK KLASIK - R



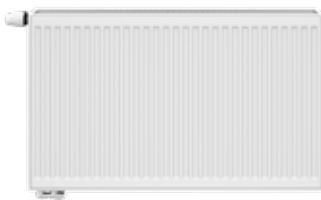
RADIK KLASIK
RADIK KLASIK - R



RADIK VK / VKU / VKM8 / VKM8 - U



RADIK VKL / VKM8 - L
RADIK VKU / VKM8 - U



RADIK VKM / VKM8 / VKM8 - U

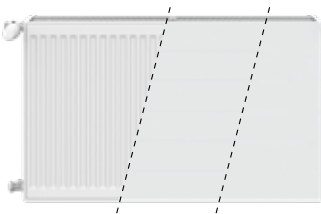


RADIK VKM - L / VKM8 - L
RADIK VKM8 - U

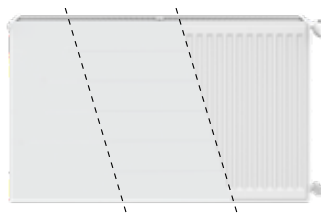


RADIK RADIATOR MODELS SUITABLE FOR RADIK V-POWER SET BASIC - Type 22

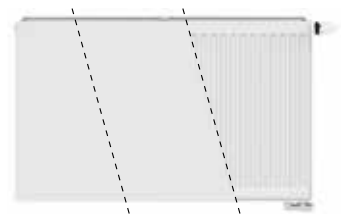
RADIK KLASIK
RADIK PLAN / LINE KLASIK
RADIK KLASIK - R
RADIK PLAN / LINE KLASIK - R



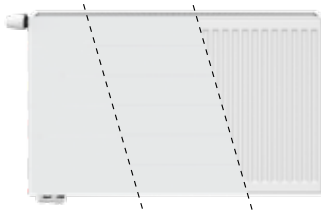
RADIK KLASIK
RADIK PLAN / LINE KLASIK
RADIK KLASIK - R
RADIK PLAN / LINE KLASIK - R



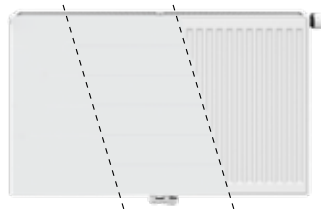
RADIK VK / VKU / VKM / VKM8 / VKM8 -U
RADIK PLAN VK / VKM / VKM8
RADIK LINE VK / VKM / VKM8



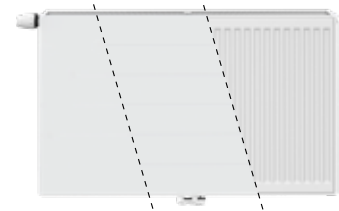
RADIK VKM8 - U
RADIK VKL / VKM8 - L
RADIK PLAN VKL / VKM8 - L
RADIK LINE VKL / VKM8 - L



RADIK VKM / VKM8 / VKM8 - U
RADIK PLAN VKM / VKM8
RADIK LINE VKM / VKM8



RADIK VKM8 - U
RADIK VKM - L / VKM8 - L
RADIK PLAN VKM - L / VKM8 - L
RADIK LINE VKM - L / VKM8 - L



RADIK V-POWER

Heat and cooling output Q [W] for the heat transfer medium water according to EN 16430

| Type 22 RADIK V-POWER | | | | | | | | | | |
|-----------------------|---|--------|----------|---------|--------|---------|---------|--------|---------|---------|
| Height H [mm] | | 524 | | | 624 | | | 924 | | |
| Length L [mm] | t ₁ /t ₂ /t ₃ [°C] | Static | Comfort | Dynamic | Static | Comfort | Dynamic | Static | Comfort | Dynamic |
| | | 400 | 55/45/20 | 271 | 358 | 391 | 313 | 408 | 446 | 437 |
| 45/35/20 | 163 | | 225 | 246 | 188 | 257 | 280 | 263 | 344 | 376 |
| 40/35/20 | 138 | | 193 | 211 | 159 | 221 | 241 | 222 | 296 | 323 |
| 35/30/20 | 90 | | 131 | 143 | 104 | 150 | 164 | 146 | 202 | 220 |
| 17/19/28 | 30 | | 41 | 49 | 33 | 44 | 52 | 46 | 54 | 63 |
| 18/20/28 | 26 | 36 | 43 | 28 | 39 | 46 | 38 | 47 | 55 | |
| 500 | 55/45/20 | 339 | 448 | 489 | 392 | 511 | 557 | 546 | 681 | 743 |
| | 45/35/20 | 204 | 281 | 307 | 236 | 321 | 351 | 328 | 430 | 469 |
| | 40/35/20 | 172 | 241 | 264 | 199 | 276 | 301 | 278 | 370 | 403 |
| | 35/30/20 | 113 | 164 | 179 | 131 | 188 | 205 | 182 | 252 | 275 |
| | 17/19/28 | 38 | 52 | 61 | 42 | 55 | 65 | 57 | 67 | 79 |
| 18/20/28 | 33 | 45 | 54 | 35 | 48 | 57 | 47 | 58 | 69 | |
| 600 | 55/45/20 | 406 | 537 | 586 | 470 | 613 | 668 | 655 | 817 | 892 |
| | 45/35/20 | 244 | 338 | 369 | 283 | 385 | 421 | 394 | 516 | 563 |
| | 40/35/20 | 207 | 290 | 316 | 239 | 331 | 361 | 333 | 444 | 484 |
| | 35/30/20 | 135 | 197 | 215 | 157 | 225 | 246 | 219 | 303 | 331 |
| | 17/19/28 | 46 | 62 | 73 | 50 | 66 | 78 | 68 | 80 | 95 |
| 18/20/28 | 39 | 55 | 65 | 42 | 58 | 69 | 57 | 70 | 83 | |
| 700 | 55/45/20 | 474 | 627 | 684 | 548 | 715 | 780 | 764 | 954 | 1041 |
| | 45/35/20 | 285 | 394 | 430 | 330 | 450 | 491 | 460 | 602 | 657 |
| | 40/35/20 | 241 | 338 | 369 | 279 | 386 | 421 | 389 | 517 | 565 |
| | 35/30/20 | 158 | 230 | 251 | 183 | 263 | 287 | 255 | 353 | 386 |
| | 17/19/28 | 53 | 72 | 85 | 58 | 77 | 91 | 80 | 94 | 111 |
| 18/20/28 | 46 | 64 | 75 | 49 | 68 | 80 | 66 | 82 | 97 | |
| 800 | 55/45/20 | 542 | 716 | 782 | 627 | 817 | 891 | 873 | 1090 | 1190 |
| | 45/35/20 | 326 | 450 | 491 | 377 | 514 | 561 | 525 | 688 | 751 |
| | 40/35/20 | 276 | 386 | 422 | 319 | 441 | 481 | 444 | 591 | 646 |
| | 35/30/20 | 181 | 263 | 287 | 209 | 300 | 328 | 291 | 404 | 441 |
| | 17/19/28 | 61 | 82 | 98 | 66 | 88 | 104 | 91 | 107 | 126 |
| 18/20/28 | 52 | 73 | 86 | 56 | 77 | 92 | 76 | 94 | 110 | |
| 900 | 55/45/20 | 609 | 806 | 880 | 705 | 919 | 1003 | 982 | 1226 | 1338 |
| | 45/35/20 | 366 | 506 | 553 | 424 | 578 | 631 | 591 | 774 | 845 |
| | 40/35/20 | 310 | 435 | 474 | 359 | 496 | 542 | 500 | 665 | 726 |
| | 35/30/20 | 203 | 296 | 323 | 235 | 338 | 369 | 328 | 454 | 496 |
| | 17/19/28 | 68 | 93 | 110 | 75 | 99 | 117 | 103 | 121 | 142 |
| 18/20/28 | 59 | 82 | 97 | 63 | 87 | 103 | 85 | 105 | 124 | |
| 1000 | 55/45/20 | 677 | 895 | 977 | 783 | 1021 | 1114 | 1092 | 1362 | 1487 |
| | 45/35/20 | 407 | 563 | 614 | 471 | 642 | 701 | 657 | 860 | 939 |
| | 40/35/20 | 344 | 483 | 527 | 398 | 552 | 602 | 555 | 739 | 807 |
| | 35/30/20 | 226 | 328 | 359 | 261 | 375 | 410 | 364 | 505 | 551 |
| | 17/19/28 | 76 | 103 | 122 | 83 | 110 | 130 | 114 | 134 | 158 |
| 18/20/28 | 65 | 91 | 108 | 71 | 97 | 114 | 95 | 117 | 138 | |
| 1100 | 55/45/20 | 745 | 985 | 1075 | 862 | 1123 | 1226 | 1201 | 1498 | 1636 |
| | 45/35/20 | 448 | 619 | 676 | 518 | 707 | 771 | 722 | 946 | 1033 |
| | 40/35/20 | 379 | 531 | 580 | 438 | 607 | 662 | 611 | 813 | 888 |
| | 35/30/20 | 248 | 361 | 394 | 287 | 413 | 451 | 401 | 555 | 606 |
| | 17/19/28 | 84 | 113 | 134 | 91 | 121 | 143 | 125 | 147 | 174 |
| 18/20/28 | 72 | 100 | 119 | 78 | 107 | 126 | 104 | 129 | 152 | |
| 1200 | 55/45/20 | 813 | 1074 | 1173 | 940 | 1225 | 1337 | 1310 | 1635 | 1784 |
| | 45/35/20 | 489 | 675 | 737 | 565 | 771 | 841 | 788 | 1032 | 1127 |
| | 40/35/20 | 413 | 579 | 633 | 478 | 662 | 722 | 666 | 887 | 968 |
| | 35/30/20 | 271 | 394 | 430 | 313 | 451 | 492 | 437 | 606 | 661 |
| | 17/19/28 | 91 | 124 | 146 | 100 | 132 | 156 | 137 | 161 | 190 |
| 18/20/28 | 78 | 109 | 129 | 85 | 116 | 137 | 114 | 140 | 165 | |
| 1400 | 55/45/20 | 948 | 1254 | 1368 | 1096 | 1429 | 1560 | 1528 | 1907 | 2082 |
| | 45/35/20 | 570 | 788 | 860 | 659 | 899 | 981 | 919 | 1204 | 1314 |
| | 40/35/20 | 482 | 676 | 738 | 558 | 772 | 843 | 777 | 1035 | 1130 |
| | 35/30/20 | 316 | 460 | 502 | 366 | 526 | 574 | 510 | 707 | 771 |
| | 17/19/28 | 106 | 144 | 171 | 116 | 154 | 182 | 160 | 188 | 221 |
| 18/20/28 | 91 | 127 | 151 | 99 | 136 | 160 | 132 | 164 | 193 | |
| 1600 | 55/45/20 | 1083 | 1433 | 1564 | 1253 | 1634 | 1783 | 1746 | 2179 | 2379 |
| | 45/35/20 | 651 | 900 | 983 | 754 | 1028 | 1122 | 1050 | 1376 | 1502 |
| | 40/35/20 | 551 | 773 | 843 | 637 | 882 | 963 | 889 | 1183 | 1291 |
| | 35/30/20 | 361 | 525 | 574 | 418 | 601 | 656 | 583 | 808 | 882 |
| | 17/19/28 | 122 | 165 | 195 | 133 | 176 | 208 | 182 | 214 | 253 |
| 18/20/28 | 104 | 146 | 172 | 113 | 155 | 183 | 151 | 187 | 221 | |
| 1800 | 55/45/20 | 1219 | 1612 | 1759 | 1410 | 1838 | 2005 | 1965 | 2452 | 2676 |
| | 45/35/20 | 733 | 1013 | 1106 | 848 | 1156 | 1262 | 1182 | 1548 | 1690 |
| | 40/35/20 | 620 | 869 | 949 | 717 | 993 | 1083 | 1000 | 1331 | 1452 |
| | 35/30/20 | 406 | 591 | 645 | 470 | 676 | 737 | 656 | 909 | 992 |
| | 17/19/28 | 137 | 185 | 220 | 149 | 198 | 234 | 205 | 241 | 284 |
| 18/20/28 | 117 | 164 | 194 | 127 | 174 | 206 | 170 | 210 | 248 | |
| 2000 | 55/45/20 | 1354 | 1791 | 1955 | 1566 | 2042 | 2228 | 2183 | 2724 | 2974 |
| | 45/35/20 | 814 | 1125 | 1229 | 942 | 1285 | 1402 | 1313 | 1720 | 1878 |
| | 40/35/20 | 689 | 966 | 1054 | 797 | 1103 | 1204 | 1111 | 1478 | 1614 |
| | 35/30/20 | 452 | 657 | 717 | 522 | 751 | 819 | 728 | 1009 | 1102 |
| | 17/19/28 | 152 | 206 | 244 | 166 | 220 | 260 | 228 | 268 | 316 |
| 18/20/28 | 130 | 182 | 216 | 141 | 194 | 229 | 189 | 234 | 276 | |

| Height H [mm] | 524 | 624 | 924 |
|----------------------------|--------|--------|--------|
| Q_n [W/m] | 472 | 644 | 703 |
| Temperature exponent n[-] | 1.2543 | 1.1456 | 1.1456 |
| Q_n [W/m] | 76 | 103 | 122 |
| Temperature exponent n[-] | 1.4727 | 1.1775 | 1.1775 |

Q_n = Rated heat output 45/40/20 [W/m] Q_n = Nominal cooling output 17/19/28 [W/m]

Subject to technical changes.

DATA FOR ORDERING

| Model | Type | Ordering code | Code example |
|-------------------------|------|------------------|------------------|
| RADIK V-POWER | 22 | 22HHHLLL-SYP0010 | 22050100-SYP0010 |
| RADIK V-POWER SET | 22 | ZVP2-HHHLLL-0010 | ZVP2-050100-0010 |
| RADIK V-POWER SET BASIC | 22 | ZVB2-000LLL-0010 | ZVB2-000100-0010 |

HHH = height of the radiator in cm, LLL = radiator length in cm

Optional accessories

| Name | Type | Ordering code | Code example |
|----------------------|--------|------------------|---------------|
| SIDE COVER * | 22 | Z-BKN-22-HHHR ** | Z-BKN-22-500R |
| | 33 | Z-BKN-33-HHHR ** | Z-BKN-33-500R |
| EXTENSION CABLE | 180 cm | Z-PNK-18 | |
| | 500 cm | Z-PNK-50 | |
| THERMOSTATIC HEAD HC | | Z-TH-HC | |

... height of the radiator with RADIK V-POWER unit **HHH = H - 24 mm

* suitable only for KORADO radiators



SIDE COVERS

Side covers are only compatible with V-POWER / V-POWER SET / V-POWER SET BASIC (KORADO radiators).



THERMOSTATIC HEAD HC

This thermostatic head has a special K position for operation in the passive cooling mode. Suitable for all KORADO RADIK VK radiators (with integrated valve) - thread M 30 x 1,5.



EXTENSION CABLE

We supply the extension cable in lengths of 180 cm and 500 cm. It is suitable for RADIK V-POWER / V-POWER SET / V-POWER SET BASIC / V-POWER SET V / V-POWER SET VB / V-POWER SET VB-L models.

COLOUR CARD

SATIN GLOSS

code 10
White RAL 9016*



code 14
Jasmine



code 35
Silber RAL 9006



HIGH GLOSS

code 16
Bahama



code 22
Manhattan



code 26
Pergamon



code 32
Anthrazit Metallic



code 37
Red RAL 3001



code 39
Black RAL 9005



code 45
Pearl Brown



MATTE

code 47
RAL 9007



code 48
RAL 9006



code 49
RAL 7024



code 51
RAL 7016



code 54
RAL 7015



code 57
RAL 7040



DEEP MATTE

code 40
Alloy Black



code 42
Gold



code 58
Black Matt



Notice:

The colour of the radiator may vary in comparison with the colour shown in the colour card.
The standard paint finish is RAL 9016, other colours from KORADO colour range with an extra charge 30 %.
Radiators can be ordered also in other colours from RAL colour range with an extra charge 40 %.



KORADO, a. s.
Bří Hubálků 869
560 02 Česká Třebová
Czech Republic

e-mail: info@korado.cz
www.korado.com

Reg. no.: 07/24.122.2 EN